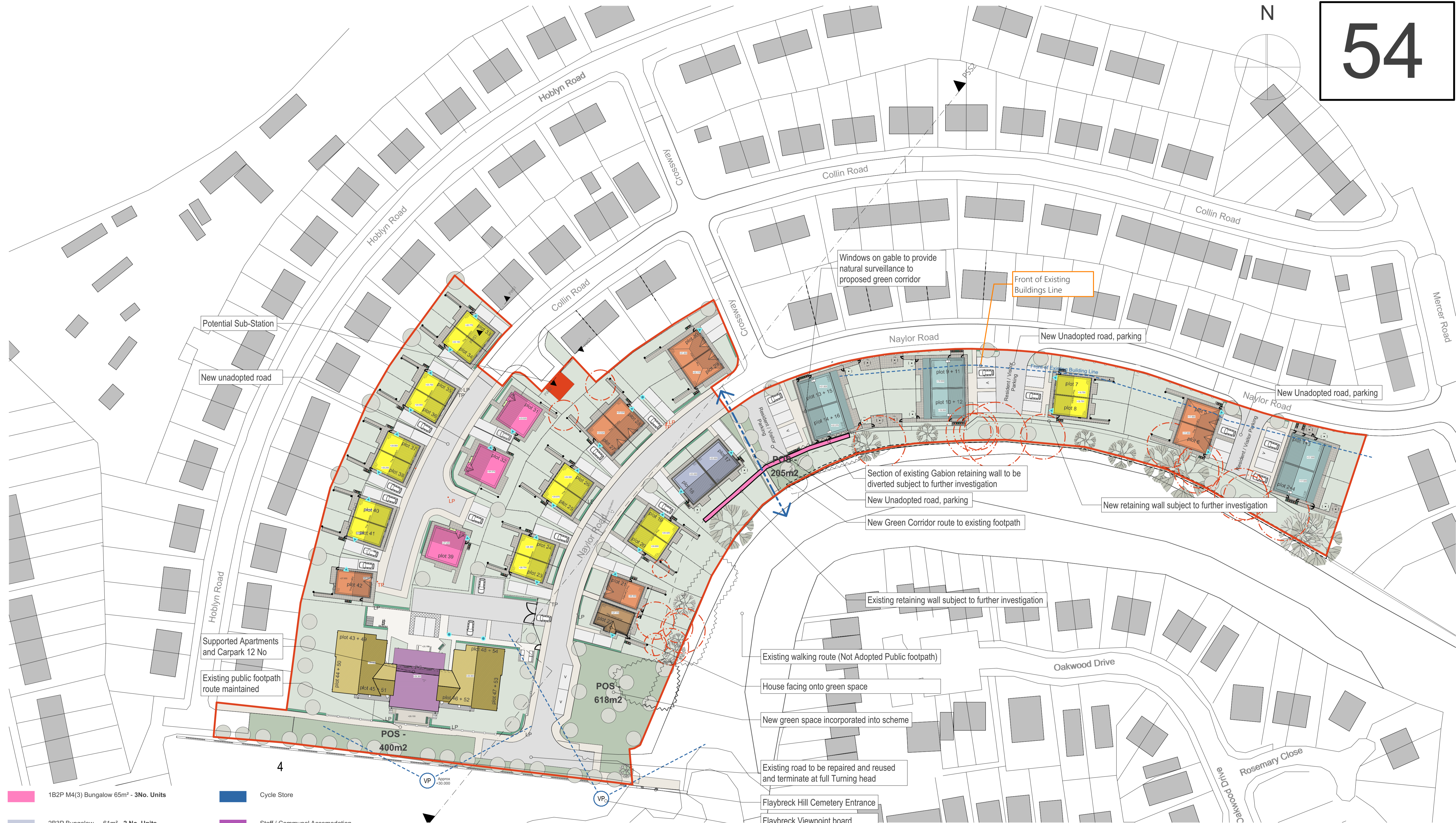


Proposed Site Plan - 1:500

Meters

54



- 1B2P M4(3) Bungalow 65m² - 3No. Units
- 2B3P Bungalow - 61m² - 2 No. Units
- 1B2P / 2B3P Cottage Style Apart 60/63m² - 12 No. Units
- 2B4P Houses - 79 m² - 16 No. Units
- 3B5P Houses - 93m² - 8 No. Units
- 3B4P Houses (CORNER) - 93m² - 1 No. Units
- Cycle Store
- Staff / Communal Accommodation
- Potential Sub-Station Location
- 1B2P Supported Apartments - 50m² - 12 No. Units

- Proposed Trees
- Existing Trees
- Extent of Trees to be removed
- Extent of Existing Gabion Retaining Wall
- Extent of Proposed Retaining Wall (Circa 300mm)
- V Extent of Visitor Parking Spaces
- VP Existing Flaybreck Cemetery Viewpoint across Birkenhead & Wallasey to be relocated

Total Number of Units - 54 Units

PROJECT Naylor Road Birkenhead, Merseyside CH43 7SN United Kingdom		TITLE Proposed Site Plan		SIZE A1	PROJECT No 1982	SCALE (1:100) 1:500	REVISION P10
DATE 22.07.25		STATUS S0		DRAWING No CG		CHECKED CG	
P Revisions refer to drawings at Status S0 to S4. ; C Revisions refer to Post Contract Construction Drawings JOHN McCALL ARCHITECTS LTD No.1 Arts Village, Henry Street, Liverpool L1 5BS Tel: 0151 707 1818 Fax: 707 1819							